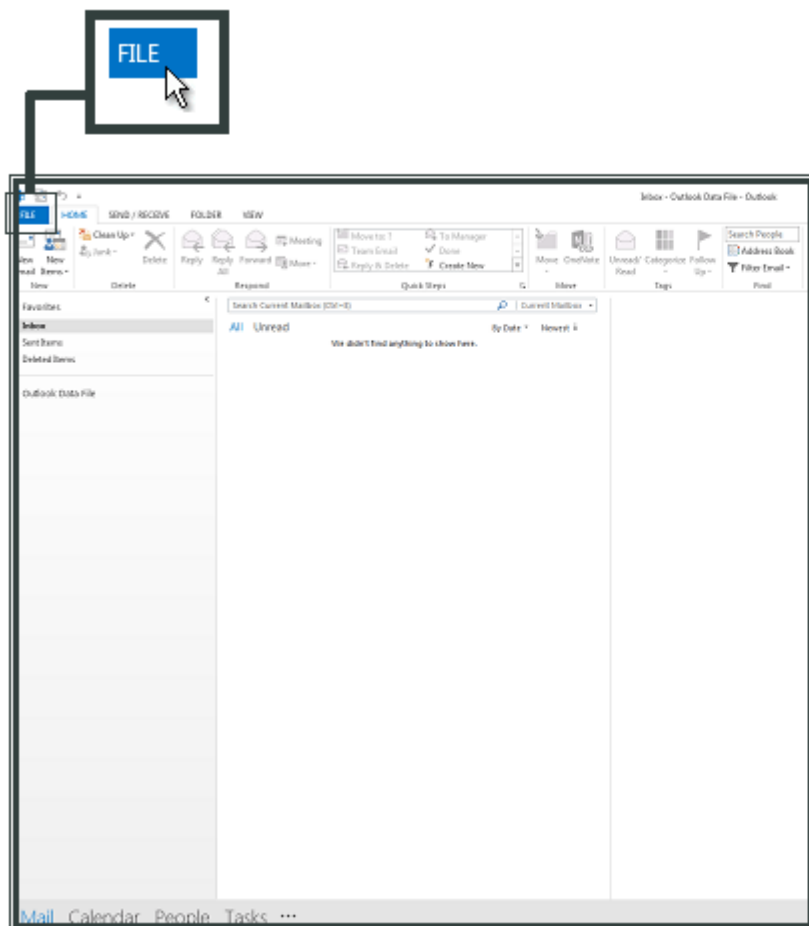
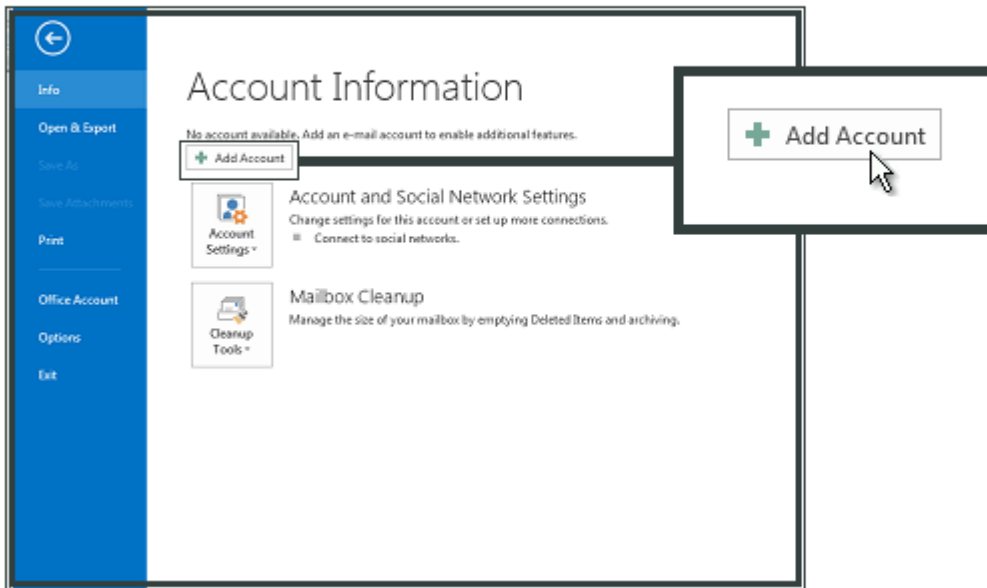


Configurazione in Microsoft Outlook 2013

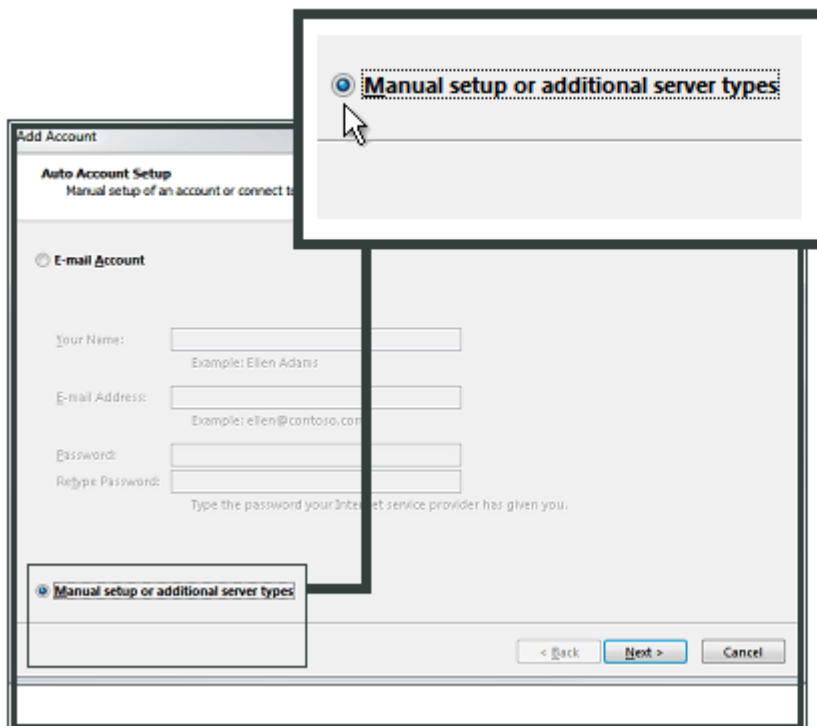
Apri **Outlook** e seleziona **File**.



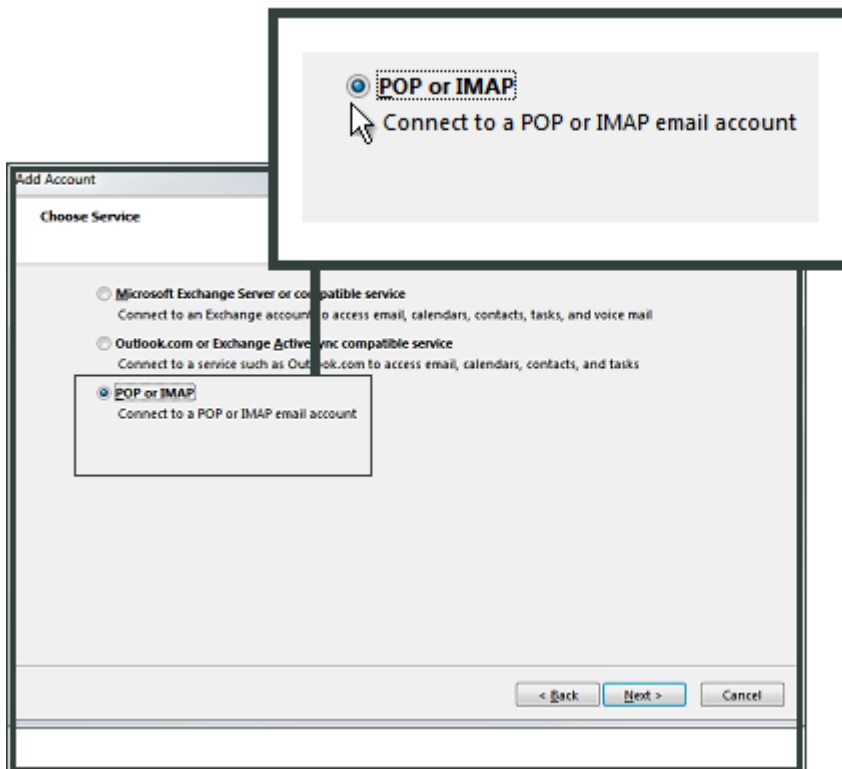
Fai clic su **Add Account**.



Seleziona **Manual setup or additional server types** a fai clic su **Next**



Seleziona **POP o IMAP** e fai clic su **Next**



Immetti **Tuo nome e Indirizzo E-mail**

Seleziona **IMAP** come tipo di account.

Nel campo **Incoming mail server (IMAP)**, immetti **imap.cbsolt.net**

Nel campo **Outgoing mail server (SMTP)**, immetti **smtp.cbsolt.net**

Nel campo **Logon Information**, immetti l'**e-mail address** e la **password** creati nel Pannello di controllo.

Fai clic su **More Settings**.

The image shows a 'Add Account' dialog box for configuring an email account. The dialog is titled 'Add Account' and has a subtitle 'POP and IMAP Account Settings'. Below the subtitle, it says 'Enter the mail server settings for your account.' The dialog is divided into several sections: 'User Information', 'Server Information', and 'Logon Information'. The 'User Information' section contains fields for 'Your Name' (with 'Your Name' entered) and 'Email Address' (with 'mail@example.com' entered). The 'Server Information' section contains a dropdown for 'Account Type' (set to 'IMAP'), a text field for 'Incoming mail server' (with 'imap.cbsolt.net' entered), and a text field for 'Outgoing mail server (SMTP)' (with 'smtp.cbsolt.net' entered). The 'Logon Information' section contains a text field for 'User Name' (with 'mail@example.com' entered) and a password field (with asterisks). There is a checkbox for 'Remember password' which is checked. At the bottom of the dialog, there is a checkbox for 'Require login using Secure Password Authentication (SPA)' which is unchecked, and a 'More Settings...' button. At the very bottom, there are three buttons: 'Back', 'Next >', and 'Cancel'. A zoomed-in view of the 'Outgoing mail server (SMTP)' field is shown in the foreground, highlighting the text 'smtp.cbsolt.net' in red.

Add Account
POP and IMAP Account Settings
Enter the mail server settings for your account.

User Information
Your Name: Your Name
Email Address: mail@example.com

Server Information
Account Type: IMAP
Incoming mail server: imap.cbsolt.net
Outgoing mail server (SMTP): smtp.cbsolt.net

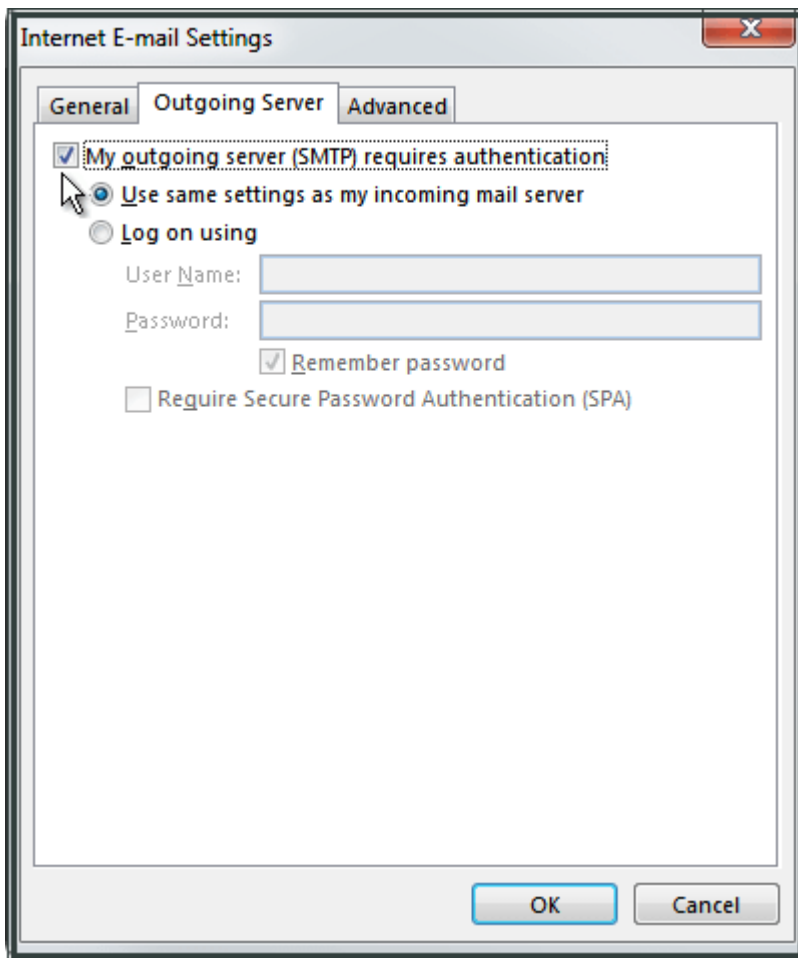
Logon Information
User Name: mail@example.com
Password: *****
 Remember password

Require login using Secure Password Authentication (SPA)

More Settings ...

Back Next > Cancel

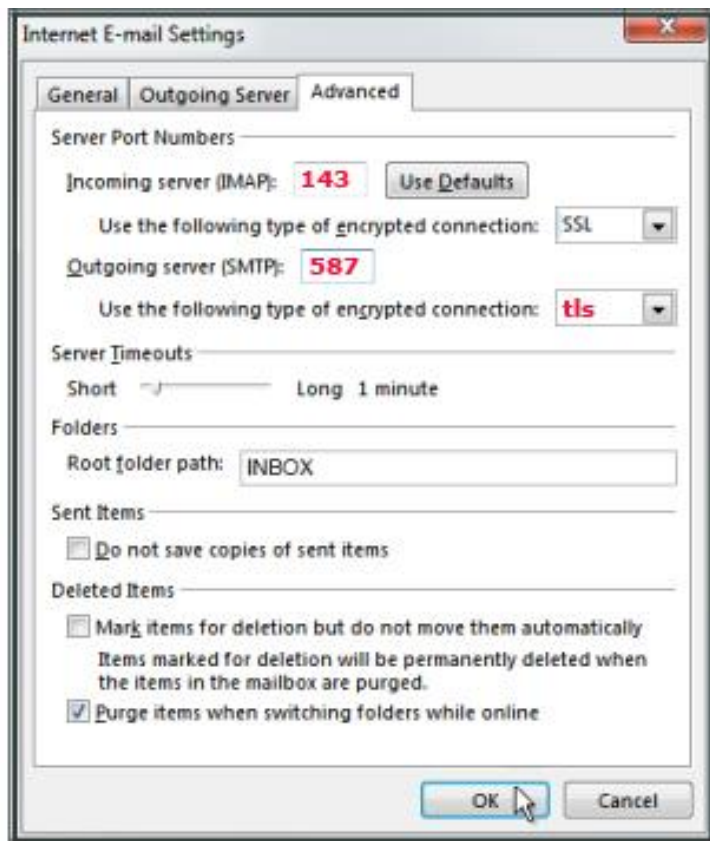
Seleziona **Outgoing Server** e quindi **My outgoing server (SMTP) requires authentication**.



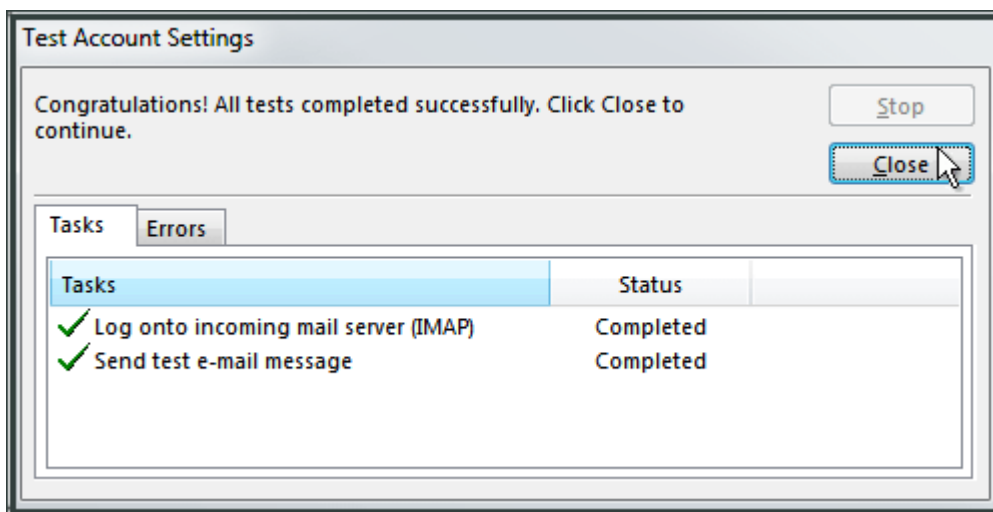
Seleziona **Advanced**.

Nel campo **Incoming server (IMAP)**, immetti **143** e seleziona **SSL**.
Nel campo **Outgoing server (SMTP)**, immetti **587** e seleziona **TLS**.
Nel campo **Root folder path** immetti **INBOX** scritta in maiuscolo.

Fai clic su **OK** e quindi su **Next**.



Fai clic su **Close**.



Il tuo account in Microsoft Outlook 2013 è stato configurato. Fai clic su **Fine**.

Add Account

You're all set!

We have all the information we need to set up your account.

Add another account...

< Back

Finish

Finish